

## Welcome to Meadowlark Mansion

## The Basement



### Hint #B1

You must figure out your way to the Penthouse to escape the Mansion via a helicopter.

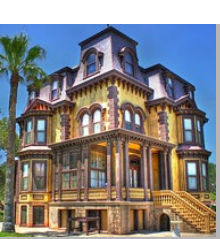
### Hint #B2

"Trust but Verify!"  
was made famous by this president.

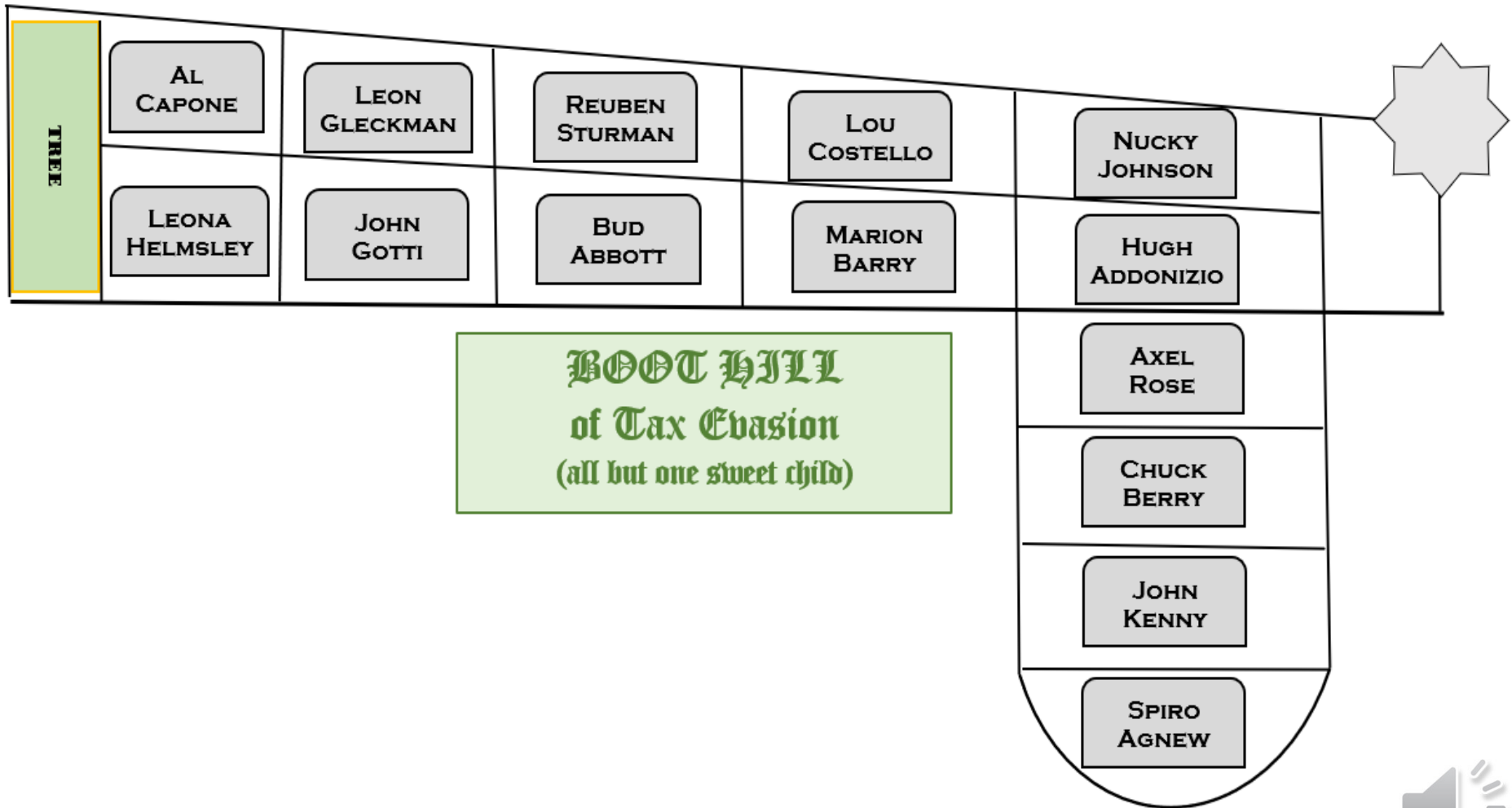
### Hint #B3

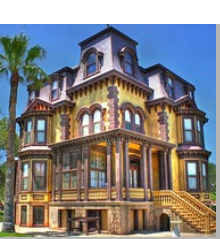
"Trust but Verify!"  
when you get to the First Floor, if you make it that far.



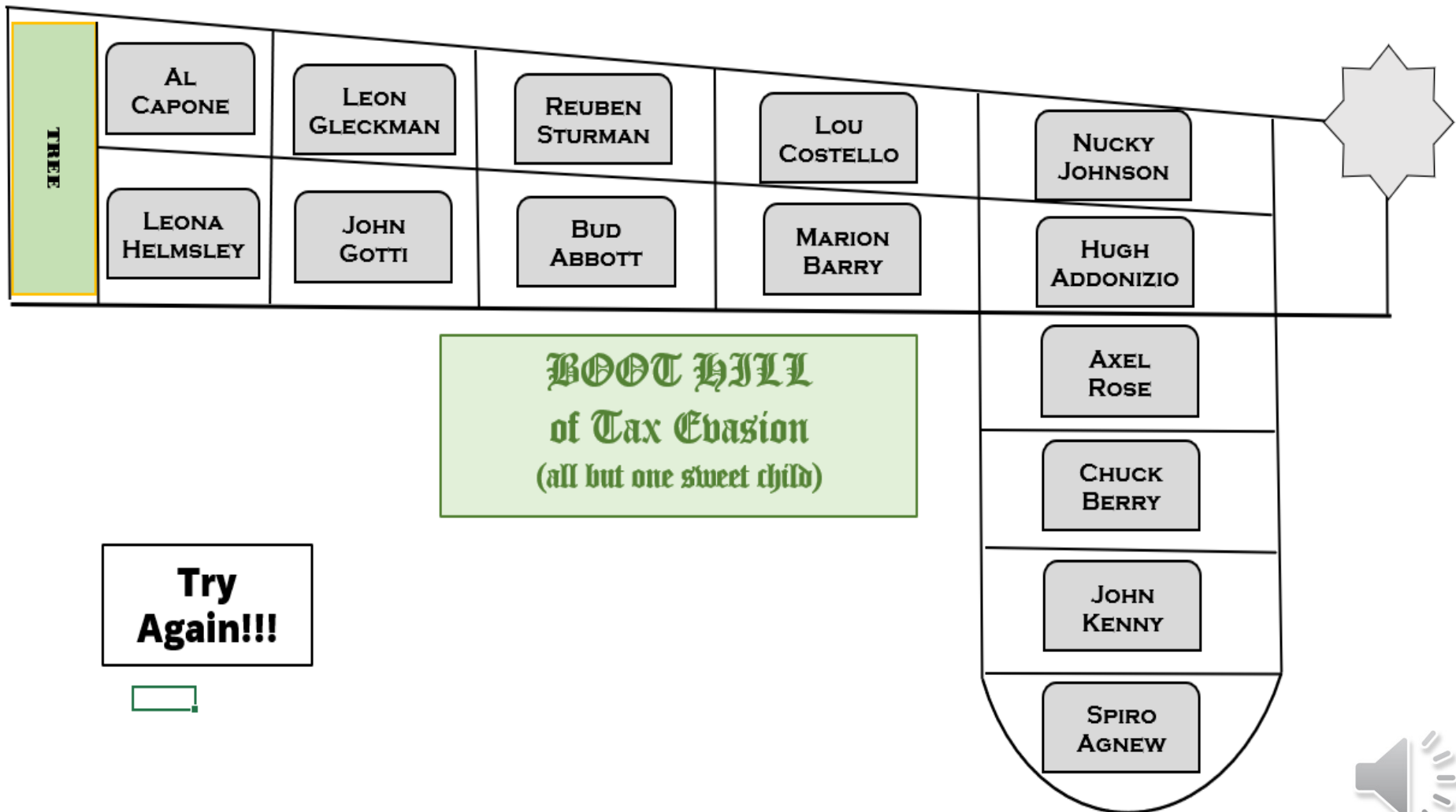


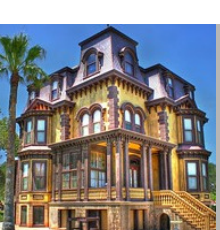
# Grabeyard



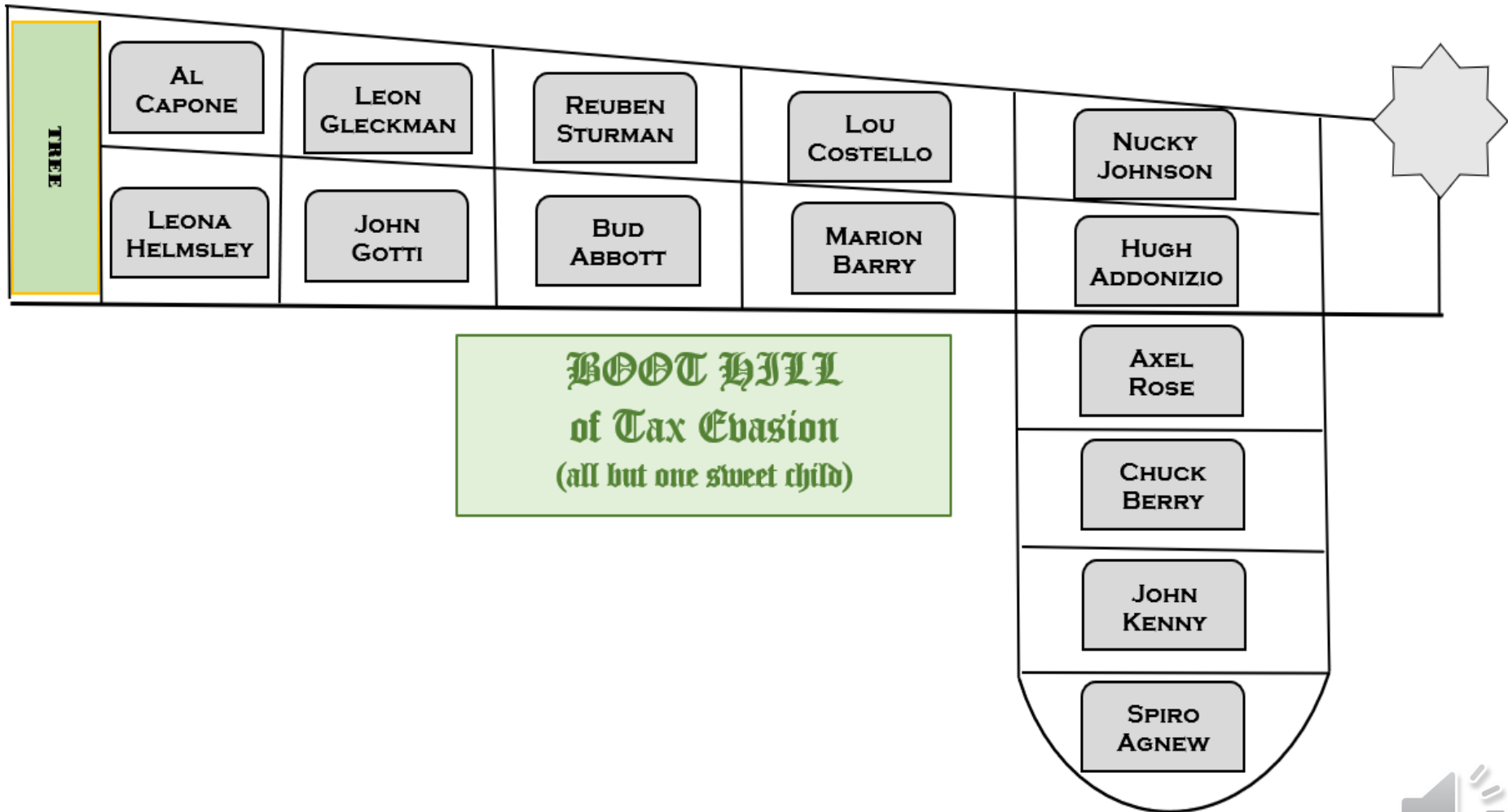


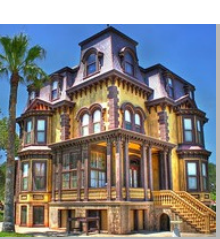
# Grabepard





# Graveyard





Picture Tools

Excel Escape Room.xlsm - Excel

File Home Insert Page Layout Formulas Data Review View Help Power Pivot QuickBooks Format Tell me what you want to do

## Welcome to Meadowlark Mansion

## The Basement



### Hint #B1

You must figure out your way to the Penthouse to escape the Mansion via a helicopter.

### Hint #B2

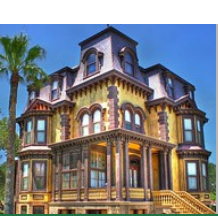
"Trust but Verify!"  
was made famous by this president.

### Hint #B3

"Trust but Verify"  
when you get to the First Floor, if you make it that far.







# Meadowlark Mansion

## First Floor

Payroll Register		1/25/2013								Check Date		1/31/2013
Employee ID	Employee Name	Gross Pay	W/H FIT	W/H SS	W/H MC	W/H PA	W/H Loc	W/H LST	W/H PUC	Net Pay	Check Number	
1	Alice Allison	760.00	84.85	47.12	11.02	23.33	7.60	2.00	0.68	583.40	111	
2	Bill Billson	360.00	27.70	22.32	5.22	11.05	3.60	2.00	0.32	287.79	112	
3	Charlie Charles	800.00	27.86	49.60	11.60	24.56	16.00	2.00	0.72	667.66	113	
4	Don Donaldson	800.00	68.93	49.60	11.60	24.56	8.00	2.00	0.72	634.59	114	
5	Ed Edwards	1,600.00	190.11	99.20	23.20	49.12	48.00	2.00	1.44	1,386.93	115	
6	Fred Fredrick	1,440.00	164.93	89.28	20.88	44.21	43.20	2.00	1.30	1,074.20	116	
7	Hill Hillson	1,600.00	190.11	99.20	23.20	49.12	48.00	2.00	1.44	1,186.93	117	
8	Il	960.00	92.93	59.52	13.92	29.47	28.80	2.00	0.86	732.50	118	
9	Jay Jaystone	880.00	102.85	54.56	12.76	27.02	26.40	2.00	0.79	653.62	119	
10	Bob	580.00	5.86	35.96	8.41	17.81	17.40	2.00	0.52	492.04	120	
		9,780.00	956.13	606.36	141.81	300.25	247.00	20.00	8.79	7,699.66		

### Hint #FF1

Remember the clue from the basement?

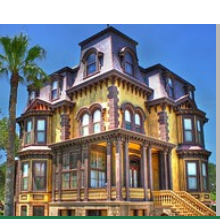
### Hint #FF2

You will need to remove Hint#FF3 text box to get to the second floor.

In addition, remember the number for later.

### Hint #FF3





# Meadowlark Mansion

# First Floor

Payroll Register		1/25/2013								Check Date		1/31/2013
Employee ID	Employee Name	Gross Pay	W/H FIT	W/H SS	W/H MC	W/H PA	W/H Loc	W/H LST	W/H PUC	Net Pay	Check Number	
1	Alice Allison	760.00	84.85	47.12	11.02	23.33	7.60	2.00	0.68	583.40	111	=C7-SUM(D7:J7)
2	Bill Billson	360.00	27.70	22.32	5.22	11.05	3.60	2.00	0.32	287.79	112	287.79
3	Charlie Charles	800.00	27.86	49.60	11.60	24.56	16.00	2.00	0.72	667.66	113	667.66
4	Don Donaldson	800.00	68.93	49.60	11.60	24.56	8.00	2.00	0.72	634.59	114	634.59
5	Ed Edwards	1,600.00	190.11	99.20	23.20	49.12	48.00	2.00	1.44	1,386.93	115	1,186.93
6	Fred Fredrick	1,440.00	164.93	89.28	20.88	44.21	43.20	2.00	1.30	1,074.20	116	1,074.20
7	Hill Hillson	1,600.00	190.11	99.20	23.20	49.12	48.00	2.00	1.44	1,186.93	117	1,186.93
8	Il	960.00	92.93	59.52	13.92	29.47	28.80	2.00	0.86	732.50	118	732.50
9	Jay Jaystone	880.00	102.85	54.56	12.76	27.02	26.40	2.00	0.79	653.62	119	653.62
10	Bob	580.00	5.86	35.96	8.41	17.81	17.40	2.00	0.52	492.04	120	492.04
		9,780.00	956.13	606.36	141.81	300.25	247.00	20.00	8.79	7,699.66		

## Hint #FF1

Remember the clue from the basement?

## Hint #FF2

You will need to remove Hint#FF3 text box to get to the second floor.  
In addition, remember the number for later.

## Hint #FF3



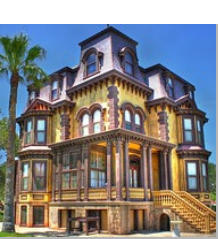
**Slide 7**

---

**LM2**

Law, Mark, 3/6/2023





File Home Insert Page Layout Formulas Data Review View Help Power Pivot QuickBooks Tell me what you want to do

Spelling Thesaurus Check Accessibility Smart Lookup Translate New Comment Delete Previous Next Show/Hide Comment Show All Comments

Unprotect Sheet Protect Workbook Share Workbook Track Changes

Protect and Share Workbook Allow Users to Edit Ranges

Employee ID	Employee Name	Gross Pay	W/H FIT	W/H SS	W/H MC	W/H PA	W/H Loc	W/H LST	W/H			
1	Alice Allison	760.00	84.85	47.12	11.02	23.33	7.60	2.00				
2	Bill Billson	360.00	27.70	22.32	5.22	11.05	3.60	2.00				
3	Charlie Charles	800.00	27.86	49.60	11.60	24.56	16.00	2.00				
4	Don Donaldson	800.00	68.93	49.60	11.60	24.56	8.00	2.00				
5	Ed Edwards	1,600.00	190.11	99.20	23.20	49.12	48.00	2.00				
6	Fred Fredrick	1,440.00	164.93	89.28	20.88	44.21	43.20	2.00				
7	Hill Hillson	1,600.00	190.11	99.20	23.20	49.12	48.00	2.00				
8	Il	960.00	92.93	59.52	13.92	29.47	28.80	2.00	0.86	732.50	118	732.50
9	Jay Jaystone	880.00	102.85	54.56	12.76	27.02	26.40	2.00	0.79	653.62	119	653.62
10	Bob	580.00	5.86	35.96	8.41	17.81	17.40	2.00	0.52	492.04	120	492.04
		9,780.00	956.13	606.36	141.81	300.25	247.00	20.00	8.79	7,699.66		

**Unprotect Sheet**

Prevent unwanted changes from others by limiting their ability to edit.

For example, you can prevent people from editing locked cells or making formatting changes.

[Tell me more](#)

Enter  
115  
To Unprotect

**Hint #FF1**

Remember the clue from the basement?

**Hint #FF2**

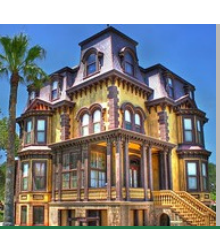
You will need to remove Hint#FF3 text box to get to the second floor.

In addition, remember the number for later.

**Link to Second Floor**

**Hint #FF3**





# Meadowlark Mansion

# First Floor

Payroll Register		1/25/2013								Check Date		1/31/2013
Employee ID	Employee Name	Gross Pay	W/H FIT	W/H SS	W/H MC	W/H PA	W/H Loc	W/H LST	W/H PUC	Net Pay	Check Number	
1	Alice Allison	760.00	84.85	47.12	11.02	23.33	7.60	2.00	0.68	583.40	111	
2	Bill Billson	360.00	27.70	22.32	5.22	11.05	3.60	2.00	0.32	287.79	112	
3	Charlie Charles	800.00	27.86	49.60	11.60	24.56	16.00	2.00	0.72	667.66	113	
4	Don Donaldson	800.00	68.93	49.60	11.60	24.56	8.00	2.00	0.72	634.59	114	
5	Ed Edwards	1,600.00	190.11	99.20	23.20	49.12	48.00	2.00	1.44	1,386.93	115	
6	Fred Fredrick	1,440.00	164.93	89.28	20.88	44.21	43.20	2.00	1.30	1,074.20	116	
7	Hill Hillson	1,600.00	190.11	99.20	23.20	49.12	48.00	2.00	1.44	1,186.93	117	
8	Il	960.00	92.93	59.52	13.92	29.47	28.80	2.00	0.86	732.50	118	
9	Jay Jaystone	880.00	102.85	54.56	12.76	27.02	26.40	2.00	0.79	653.62	119	
10	Bob	580.00	5.86	35.96	8.41	17.81	17.40	2.00	0.52	492.04	120	
		9,780.00	956.13	606.36	141.81	300.25	247.00	20.00	8.79	7,699.66		

583.40  
287.79  
667.66  
634.59  
1,186.93  
1,074.20  
1,186.93  
732.50  
653.62  
492.04

## Hint #FF1

Remember the clue from the basement?

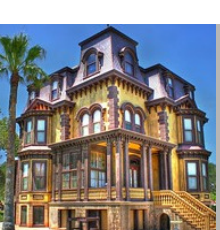
## Hint #FF2

You will need to remove Hint#FF3 text box to get to the second floor.  
In addition, remember the number for later.

Link to Second Floor

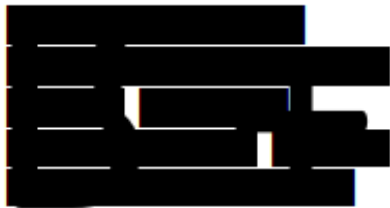
## Hint #FF3





# Meadowlark Mansion

## Second Floor



Range 1:  
What was the CPA's spreadsheet of choice in the 1990s?  
Lotus \_\_\_\_

Range 2:  
The Word Processor of choice in the 1990s was  
\_\_\_\_ Perfect

Range 3:  
What was the most popular small business software today?  
\_\_\_\_

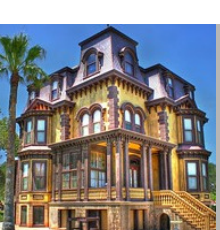
Range 4:  
\_\_\_\_ is one of the world's leading producers of software for the management of business processes.



**Hint #5F2**  
"You will need to minus this number"  
WHEN you get to the THIRD floor, if you make it that far! And, add it somewhere else.

**Hint #5F1**  
You will need a little "concentration"





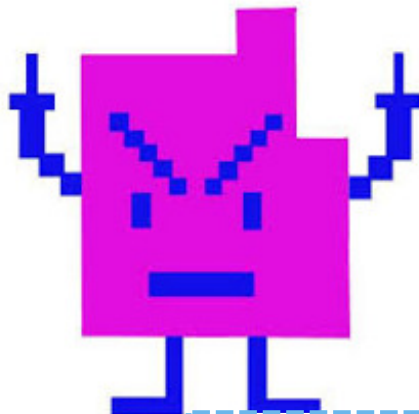
# Meadowlark Mansion

## Second Floor

B +



+



Range 1:  
What was the CPA's spreadsheet of choice in the 1990s?  
Lotus \_\_\_\_

Range 2:  
The Word Processor of choice in the 1990s was  
\_\_\_\_\_ Perfect

Range 3:  
What was the most popular small business software today?  
\_\_\_\_

Range 4:  
\_\_\_\_\_ is one of the world's leading producers of software for the management of business processes.

### Hint #512

"You will need to minus this number"

WHEN you get to the THIRD floor, if you make it that far! And, add it somewhere else.

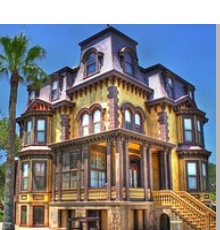
### Hint #511

You will need a little "concentration"

3







# Meadowlark Mansion

## Second Floor

B +

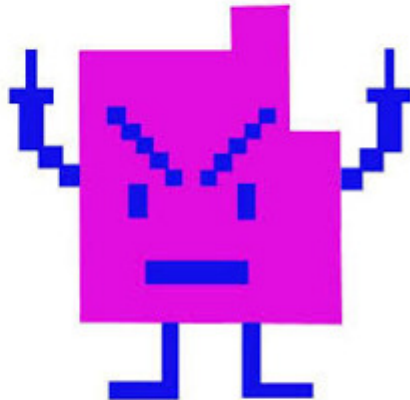


**Range 1:**  
What was the CPA's spreadsheet of choice in the 1990s?  
Lotus \_\_\_\_

**Range 2:**  
The Word Processor of choice in the 1990s was  
\_\_\_\_ Perfect

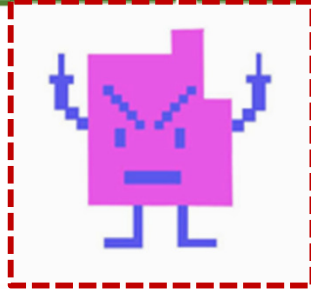


+



**Range 3:**  
What was the most popular small business software today?  
\_\_\_\_

**Range 4:**  
\_\_\_\_ is one of the world's leading producers of software for the management of business processes.



### Hint #Sf1

You will need a little "concentration"

3

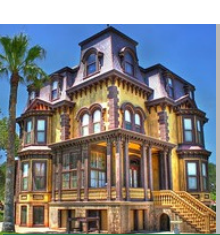
### Hint #Sf2

"You will need to minus this number"

WHEN you get to the THIRD floor, if you make it that far! And, add it somewhere else.







# Meadowlark Mansion

## Third Floor

Encrypted Password		-3		Password
☞				
☞				
☞				
☹				
☹				
☞				
☹				
☹				
☞				
☺				

-3

Lookup Tables		
1	A	1
2	B	2
3	C	3
4	D	4
5	E	5
6	F	6
7	G	7
8	H	8
9	I	9
10	J	10
11	K	11
12	L	12
13	M	13
14	N	14
15	O	15
16	P	16
17	Q	17
18	R	18
19	S	19
20	T	20
21	U	21
22	V	22
23	W	23
24	X	24
25	Y	25
26	Z	26

**Hint # T F 1**  
 One characteristic that makes information useful is Accessibility. You can access it and is available in a format you can use

**Hint # T F 2**  
 "You will need to minus this number" obtained from the SECOND floor.

**Hint # T F 3**





# Meadowlark Mansion

## Third Floor

Encrypted Password		-3		Password
F	6	-3	3	C
D	4	-3	1	A
V	22	-3	19	S
K	11	-3	8	H
L	12	-3	9	I
V	22	-3	19	S
N	14	-3	11	K
L	12	-3	9	I
Q	17	-3	14	N
J	10	-3	7	G

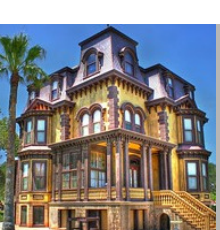
Lookup Tables		
1	A	1
2	B	2
3	C	3
4	D	4
5	E	5
6	F	6
7	G	7
8	H	8
9	I	9
10	J	10
11	K	11
12	L	12
13	M	13
14	N	14
15	O	15
16	P	16
17	Q	17
18	R	18
19	S	19
20	T	20
21	U	21
22	V	22
23	W	23
24	X	24
25	Y	25
26	Z	26

**Hint # T F 1**  
 One characteristic that makes information useful is Accessibility. You can access it and is available in a format you can use

**Hint # T F 2**  
 "You will need to minus this number" obtained from the SECOND floor.

**Hint # T F 3**





# Meadowlark Mansion

## Third Floor

Encrypted Password		-3		Password
F	6	-3	3	C
D	4	-3	1	A
V	22	-3	19	S
K	11	-3	8	H
L	12	-3	9	I
V	22	-3	19	S
N	14	-3	11	K
L	12	-3	9	I
Q	17	-3	14	N
J	10	-3	7	G

Lookup Tables		
1	A	1
2	B	2
3	C	3
4	D	4
5	E	5
6	F	6
7	G	7
8	H	8
9	I	9
10	J	10
11	K	11
12	L	12
13	M	13
14	N	14
15	O	15
16	P	16
17	Q	17
18	R	18
19	S	19
20	T	20
21	U	21
22	V	22
23	W	23
24	X	24
25	Y	25
26	Z	26

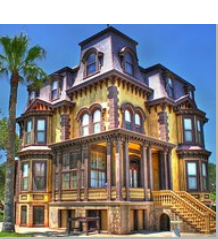
**Hint #TF1**  
 One characteristic that makes information useful is Accessibility. You can access it and is available in a format you can use

**Hint #TF2**  
 "You will need to minus this number" obtained from the SECOND floor.

Penthouse

**Hint #TF3**





## Meadowlark Mansion

## Penthouse

LAND	DATE ACQ	COST
Bloomsburg, PA	01-02-13	35,250
		35,250

1.)	Land is not depreciated because it has _____ life.
2.)	Depreciation is an _____ of cost.
3.)	Accumulated depreciation is a _____ asset account.
4.)	_____ depreciation for tax purposes provides for rapid write-off of an asset's cost in order to stimulate new investment. (5 Capitalized letters)
5.)	The total cost of a combined purchase of land and building is allocated based of their relative _____ market values.

BUILDING	DATE ACQ	COST	SECTION 179	METHOD \YEAR	BASIS	ACC DEPR 12/31/2012	DEPREC 2013	ACC DEPR 12/312013
Building	01-02-13	202,036		GDS 39	202,036	-	4,972	4,972
		202,036	-		202,036	-	4,972	4,972

### Hint # P1

You will need to answer some questions and add. Then, add two more numbers from the First and Second Floors.

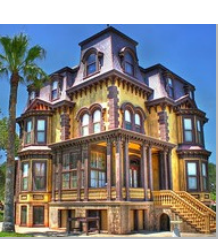
EQUIPMENT	DATE ACQ	COST	SECTION 179	METHOD \YEAR	BASIS	ACC DEPR 12/31/2012	DEPREC 2013	ACC DEPR 12/312013
Planner	05-31-07	1,272	1,272	MACRS\7	-	1,272	-	1,272
Power Base	06-30-08	675	675	MACRS\7	-	675	-	675
Router	06-10-10	2,113	2,113	MACRS\7	-	2,113	-	2,113
Helicopter	01-02-13	40,000	-	MACRS\7	40,000	-	5,716	5,716
		44,060	4,060		40,000	4,060	5,716	9,776

### Hint # P2

"You will need to remove this text box" to get to the Helicopter!

Green Bar Paper





# Meadowlark Mansion

# Penthouse

LAND	DATE ACQ	COST
Bloomsburg, PA	01-02-13	35,250
		35,250

1.) Unlimited	Land is not depreciated because it has _____ life.
2.) Allocation	Depreciation is an _____ of cost.
3.) Contra	Accumulated depreciation is a _____ asset account.
4.) MACRS	_____ depreciation for tax purposes provides for rapid write-off of an asset's cost in order to stimulate new investment. (5 Capitalized letters)
5.) Fair	The total cost of a combined purchase of land and building is allocated based of their relative _____ market values.

BUILDING	DATE ACQ	COST	SECTION 179	METHOD \YEAR	BASIS	ACC DEPR 12/31/2012	DEPREC 2013	ACC DEPR 12/312013
Building	01-02-13	202,036		GDS 39	202,036	-	4,972	4,972
		202,036	-		202,036	-	4,972	4,972

**Hint # P1**  
 You will need to answer some questions and add. Then, add two more numbers from the First and Second Floors.

EQUIPMENT	DATE ACQ	COST	SECTION 179	METHOD \YEAR	BASIS	ACC DEPR 12/31/2012	DEPREC 2013	ACC DEPR 12/312013
Planner	05-31-07	1,272	1,272	MACRS\7	-	1,272	-	1,272
Power Base	06-30-08	675	675	MACRS\7	-	675	-	675
Router	06-10-10	2,113	2,113	MACRS\7	-	2,113	-	2,113
Helicopter	01-02-13	40,000	-	MACRS\7	40,000	-	5,716	5,716
		44,060	4,060		40,000	4,060	5,716	9,776

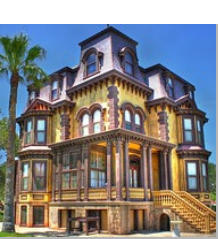
**Hint # P2**  
 "You will need to remove this text box" to get to the Helicopter!

**Green Bar Paper**

35250  
 4972  
 675  
 2113  
 5716  
 115  
 3  
 48844







## Meadowlark Mansion

## Penthouse

LAND	DATE ACQ	COST
Bloomsburg, PA	01-02-13	35,250
		35,250

1.) Unlimited	Land is not depreciated because it has _____ life.
2.) Allocation	Depreciation is an _____ of cost.
3.) Contra	Accumulated depreciation is a _____ asset account.
4.) MACRS	_____ depreciation for tax purposes provides for rapid write-off of an asset's cost in order to stimulate new investment. (5 Capitalized letters)
5.) Fair	The total cost of a combined purchase of land and building is allocated based of their relative _____ market values.

BUILDING	DATE ACQ	COST	SECTION 179	METHOD \YEAR	BASIS	ACC DEPR 12/31/2012	DEPREC 2013	ACC DEPR 12/312013
Building	01-02-13	202,036		GDS 39	202,036	-	4,972	4,972
		202,036	-		202,036	-	4,972	4,972

**Hint # P1**  
 You will need to answer some questions and add. Then, add two more numbers from the First and Second Floors.

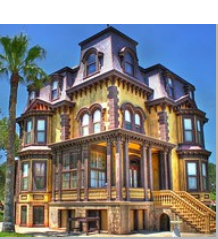
EQUIPMENT	DATE ACQ	COST	SECTION 179	METHOD \YEAR	BASIS	ACC DEPR 12/31/2012	DEPREC 2013	ACC DEPR 12/312013
Planner	05-31-07	1,272	1,272	MACRS\7	-	1,272	-	1,272
Power Base	06-30-08	675	675	MACRS\7	-	675	-	675
Router	06-10-10	2,113	2,113	MACRS\7	-	2,113	-	2,113
Helicopter	01-02-13	40,000	-	MACRS\ 7	40,000	-	5,716	5,716
		44,060	4,060		40,000	4,060	5,716	9,776



**Green Bar Paper**

**Hint #P2**  
 "You will need to remove this text box" to get to the Helicopter!





## Meadowlark Mansion

## Penthouse



LAND	DATE ACQ	COST
Bloomsburg, PA	01-02-13	35,250
		35,250

1.) Unlimited	Land is not depreciated because it has _____ life.
2.) Allocation	Depreciation is an _____ of cost.
3.) Contra	Accumulated depreciation is a _____ asset account.
4.) MACRS	_____ depreciation for tax purposes provides for rapid write-off of an asset's cost in order to stimulate new investment. (5 Capitalized letters)
5.) Fair	The total cost of a combined purchase of land and building is allocated based of their relative _____ market values.

BUILDING	DATE ACQ	COST	SECTION 179	METHOD \YEAR	BASIS	ACC DEPR 12/31/2012	DEPREC 2013	ACC DEPR 12/312013
Building	01-02-13	202,036		GDS 39	202,036	-	4,972	4,972
		202,036	-		202,036	-	4,972	4,972

### Hint # P1

You will need to answer some questions and add. Then, add two more numbers from the First and Second Floors.

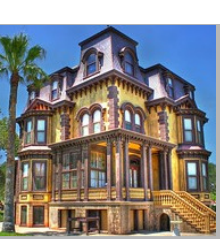
EQUIPMENT	DATE ACQ	COST	SECTION 179	METHOD \YEAR	BASIS	ACC DEPR 12/31/2012	DEPREC 2013	ACC DEPR 12/312013
Planner	05-31-07	1,272	1,272	MACRS\7	-	1,272	-	1,272
Power Base	06-30-08	675	675	MACRS\7	-	675	-	675
Router	06-10-10	2,113	2,113	MACRS\7	-	2,113	-	2,113
Helicopter	01-02-13	40,000	-	MACRS\7	40,000	-	5,716	5,716
		44,060	4,060		40,000	4,060	5,716	9,776

Green Bar Paper

### Hint #P2

"You will need to remove this text box" to get to the Helicopter!





# THE ESCAPE